

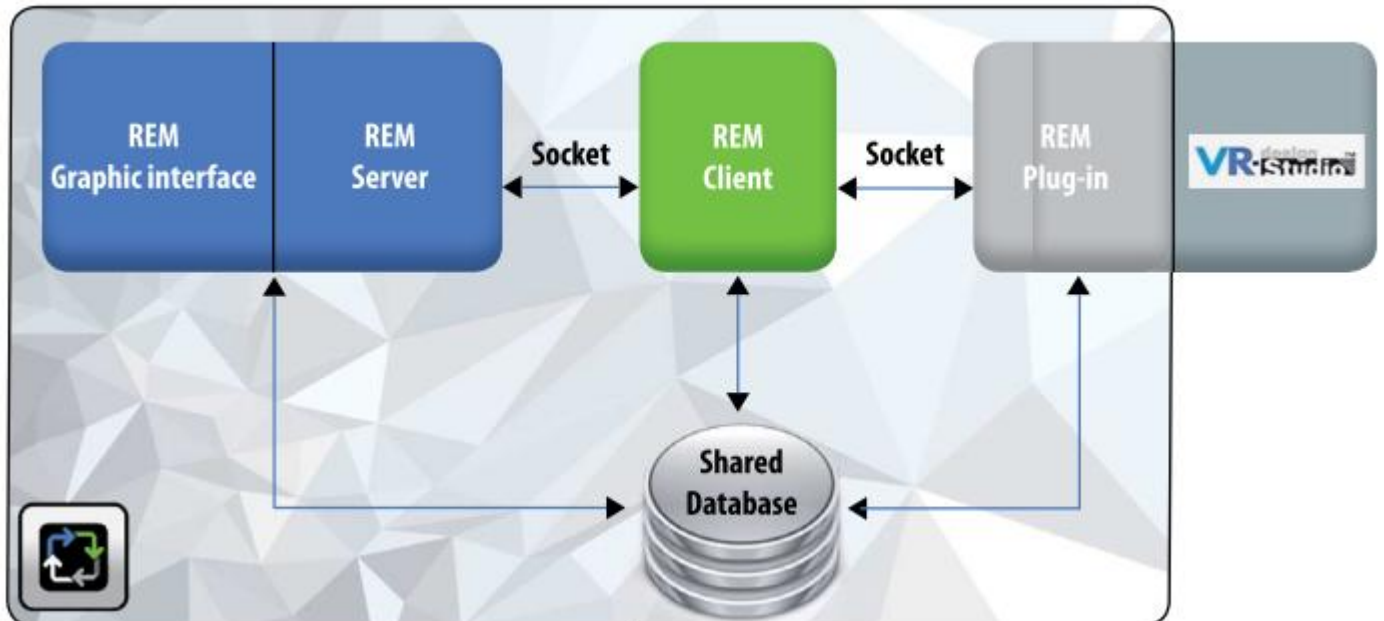
REMOTE EDITOR MANAGER (REM)

OVERVIEW

REM enables VR-Design Studio users to create, compile and execute any number of scenarios in graphical form. It has its own execution engine that interacts with VR-Design Studio through a dedicated plug-in. Its graphical user interface (GUI) designs scenarios using workflow logic. Multiple scenarios can be launched at the same time.

OPERATION

- To launch a scenario VR-Design Studio transmits a demand to REM to determine its existence through an identifier. Once it is proven to exist in the REM library the scenario is launched
- This process may be activated manually or automatically via an external plug-in



- Data exchanges are conducted through socket memory allowing the PC running the REM engine and the VR-Design Studio PC to be separate, if necessary
- A specific menu in VR-Design Studio controls the launch of the scenarios in either the manual or automatic modes
- Up to 50 scenarios can be launched at the same time

Rules	Action in process
Accident between 2 cars	Patrolman intervention
Pedestrian crossing	End
Limited speed_70	End
Fire	Firemen intervention
Traffic Jam	End
Errant animal	Pound calling
Object on the roadway	Patrolman intervention
Wrong Way	Police intervention
Limited speed_70	Start

ARCHITECTURE

REM Server

The REM server is the software module that allows the scenario to run. It is implemented as a «Server» object with several attributes as well as a set of methods

REM Client

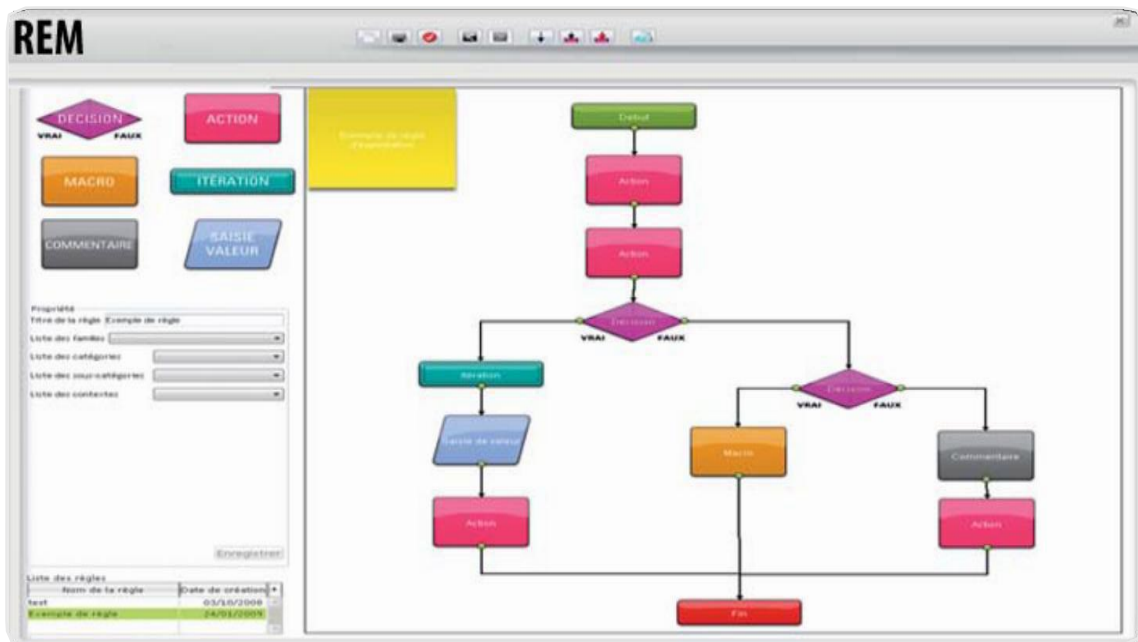
The REM client acts as a translator between the REM plug-in and the REM server. It fulfils two principal functions. Firstly, it retrieves the necessary information from the database. Secondly, it evaluates the equations that allow the rule to run

REM Plug-in

This module is responsible for the socket based communication between VR Design Studio and REM. It also manages multi-client communication and enables the exchange of messages with software hosted in remote machines.

REM Graphical User Interface (GUI)

The REM GUI module allows the user to use a graphical rule editor to create, compile and execute scenarios in graphical form



VR-Design STUDIO

VR-Design Studio is the ideal solution for many different interactive simulation applications, including urban / transport planning & design, consensus building via stakeholder consultation and driving simulation. It is used either on its own or to add value to other industry standard third-party 3D design & analysis, micro-simulation & modelling software, as well as engineering, flood modelling and LiDAR data

FORUM8 the COMPANY

FORUM8 was established in 1987. The HQ is in Tokyo, with seven other development and support facilities in Japan as well as a Super Computer Cloud Research Laboratory in Kobe. Overseas offices include: China, Taiwan, Vietnam, Korea & London with remote facilities in USA & France. FORUM8 also benefits from a network of distribution and technical partners worldwide.