



## VR-Design Studio for Civil 3D

Road design and construction to support a total of VR simulation three-dimensional design system

[Products Guide](#)  
Product Catalog (PDF)

[Electronic documentation](#)  
(27.147 KB)

### Program Overview

Next-generation solutions to bring a paradigm shift in Autodesk Civil 3D engineering design process together to UC-win/Road, VR simulation system also provides up to a total presentation.  
Eight in the forum, Autodesk Civil 3D Forum and participate.

#### [Autodesk Civil 3D Forum](#)(Autodesk Civil 3D Forum)

CAD-related software development company with six civil engineering and construction companies promote the effective use of GIS Data Forum Design and construction sector.

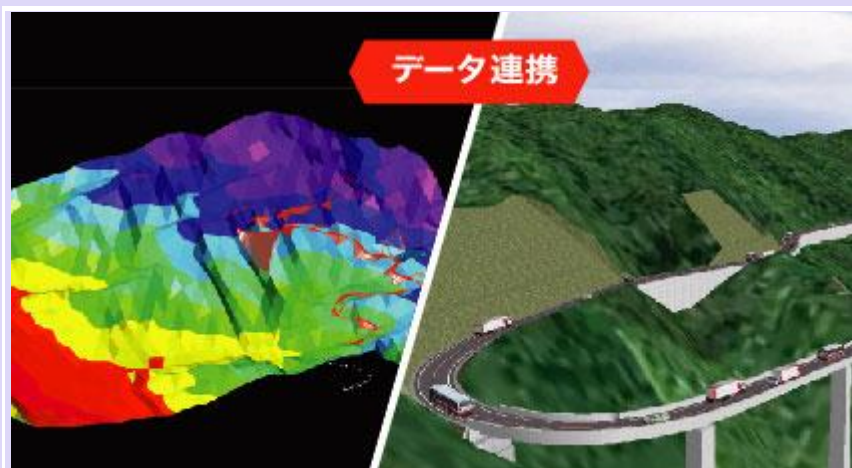
Autodesk Civil 3D in the field of 3D CAD-based construction and civil engineering to develop effective solutions to take advantage of the data, major construction company, has proposed the construction and civil engineering consulting firm.

■ **Participants: (in alphabetical order)**

(Shares) CRC Solutions, (shares) Eight Forum (shares) Emutishi, (shares) Yokogawa Technical, (shares) Kozo Keikaku Engineering,

(Shares) Kyadosenta, (shares) Shibirusofuto development, Raikajioshisutemuzu (shares) (shares), Otsuka (Secretariat)

Autodesk Civil 3D Product Information: <http://www.autodesk.co.jp/civil3d>



Autodesk · Civil 3D

FORUM8 · UC-win/Road for Civil 3D

Sequence information related ◆◆◆◆◆

- ◆ LandXML Open Consortium [LandXML.org](http://LandXML.org) At, UC-win/Road Ver.3.02 of LandXML Output function has been authenticated.
  - ▶ [Authentication page](#)



New Products ◆ UC-win/Road for Civil 3D

- ◆ [UC-win/Road for Civil 3D 2008](#)(Up & Coming '08 issue published in early spring.)
- ◆ [UC-win/Road for Civil 3D](#)(Up & Coming '06 issue on spring)

◆ Slide

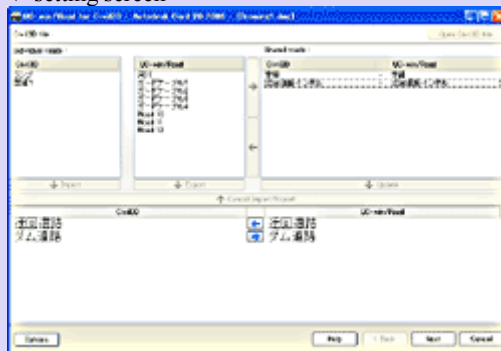
- ◆ [Slide Seminar UC-win/Road for Civil 3D product experience \(February 2006\)](#)('06 .02.16 S)

◆ seminar being held!

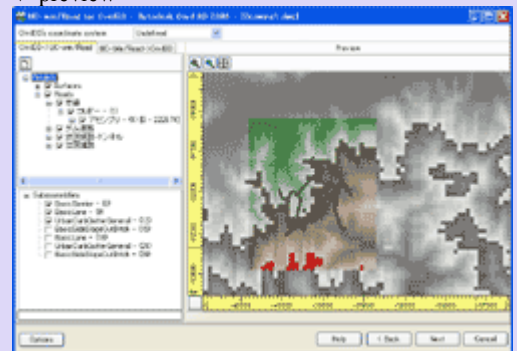
- ◆ ["Seminar UC-win/Road for Civil 3D Experience"](#)

Sample screen

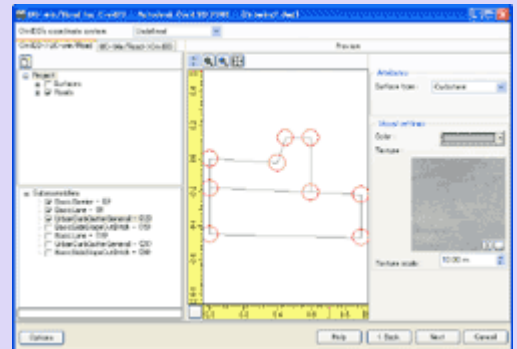
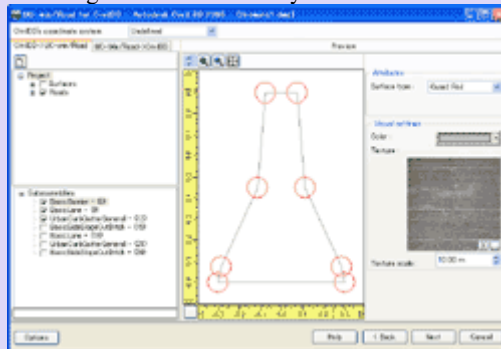
▼ setting screen



▼ preview



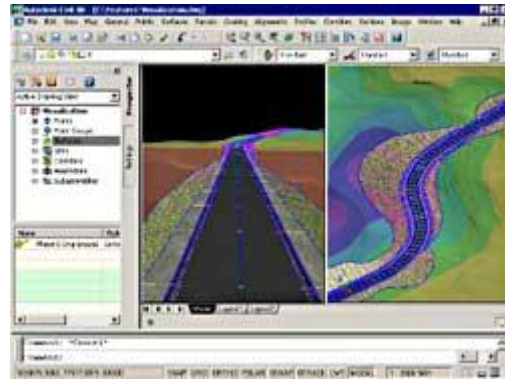
▼ setting screen sub-assembly



Civil 3D screen

AUTODESK® CIVIL 3D™ 2006

### ▼ Surface Visualization



### ▼ Superimposed Profiles

