

3D Real time/Interactive Virtual Reality software

VR/FEM/ CAD/SaaS **VR-CLOUD**  
**UC-win/Road**

# UC-win/Road Ver.10

3D Real-time Virtual Reality



Information Modeling & Virtual Reality

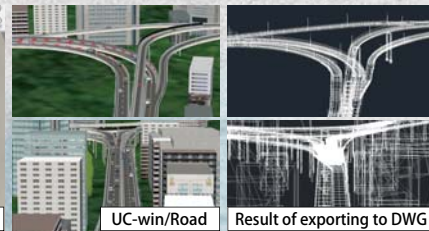
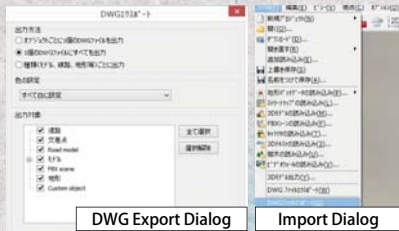


New features of Ver.9.1 / Ver.10

Released in July 2014

● **UC-win/Road DWG Tool**

Ability to exchange 3D/2D data that supports CIM (3D Model Export Plug-in required as an addition)  
**Import** : "Road section", "3D model" from DWG data  
**Export** : Roads/terrain within UC-win/Road 3D model are categorized into layers and then exported. Exact colors as seen in UC-win/Road can also be assigned to the exported model.



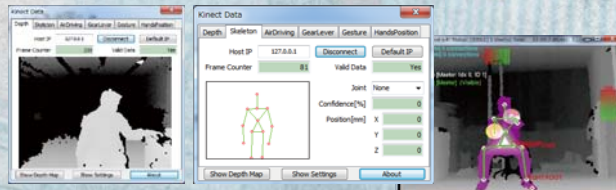
● **Rhino Plug-in**

Plug-in that displays 3D models built by Rhinoceros 3D® within the 3D environment of UC-win/Road.



● **Kinect Plug-in**

Links Depth Map Sensor (KinectTM·Xtion Pro / Live) with UC-win/Road (depth map, position of 3D joints, driving behavior, gesture, opening/closing of your palm) to allow you to drive within UC-win/Road environment or control robots.



● **Oculus Rift Plug-in**

Links a HMD equipped with head tracking sensor and tracks UC-win/Road's camera view.



● **Driver Training Plug-in**

System that assesses driver's driving skill. You can assign scoring criteria and also store assessment results for each driver.



- **Head Tracking feature**
- **Improvement of railway alignment generation feature**
- **Photo Log / Point Cloud Modeling Plug-in**
- **CycleStreet linkage Plug-in**
- **Improvement of Cluster Option**
- **Improvement of Crowd Movement Simulation feature**
- **Improvement of Parametric Model Plug-in**
- **Improvement of 3D Model Export Plug-in**